



# Kern River Groundwater Sustainability Agency

Public Meeting:

Introduction to the KRGSA and Developing a  
Groundwater Sustainability Plan

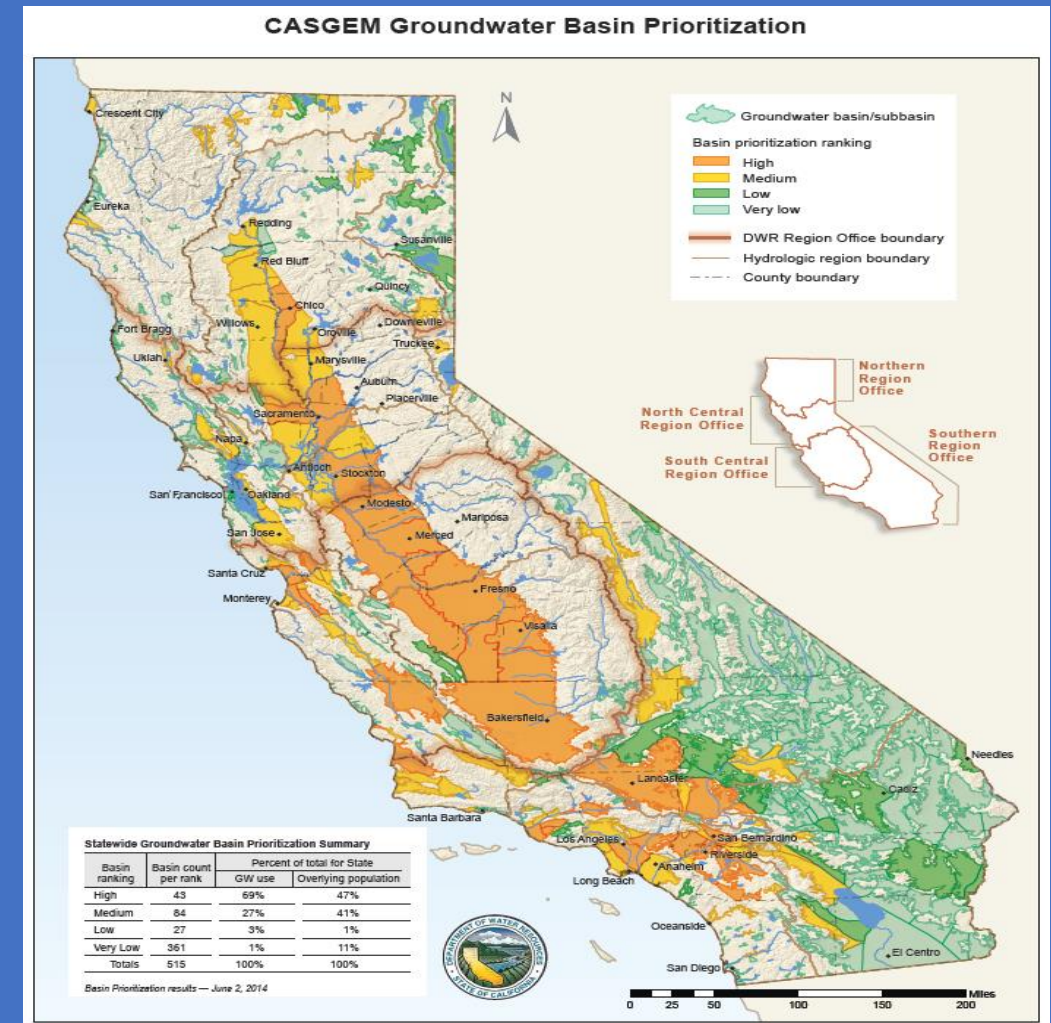
September 14, 2017

# Meeting Agenda

- SGMA Overview
- KRGSA Background
- KRGSA Groundwater Sustainability Plan Overview
- GSP Components and Activities
- GSP Timeline
- How to Get Involved
- Feedback, Questions, and Comments

# SGMA Overview

- Requires Groundwater Sustainability Agencies to be formed in high or medium priority basins by June 2017
- GSAs are to develop a Groundwater Sustainability Plan (GSP).
- Basins can have a single GSP or multiple coordinated GSPs.
- Kern County GSP(s) due January 31, 2020.



# SGMA Key Steps and Timeline

## Step One

Local agencies must form Groundwater Sustainability Agencies by June 30, 2017

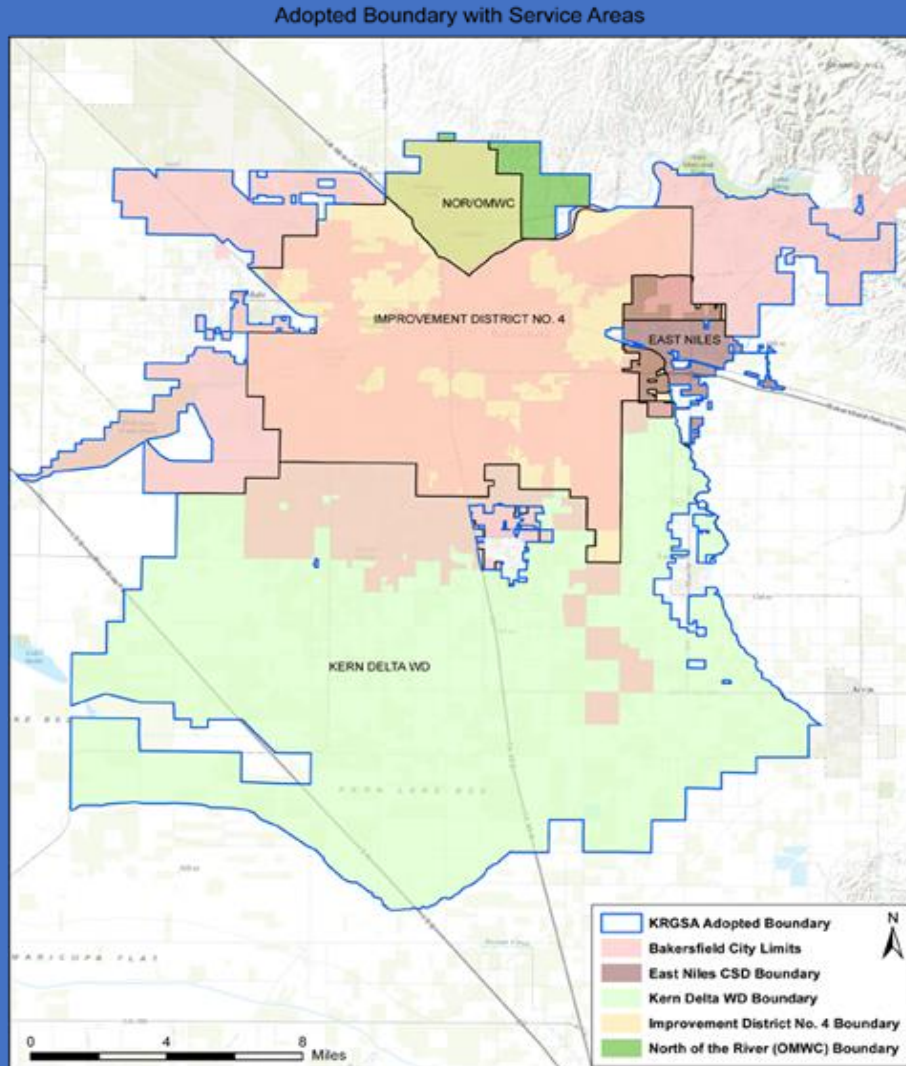
## Step Two

Local GSAs must adopt a Groundwater Sustainability Plan (GSP) by Jan. 31, 2020.

## Step Three

Once GSP is in place, local agencies must achieve sustainability by 2040.

# Kern River Groundwater Sustainability Agency



Source: Kern River Groundwater Sustainability Agency

## Core Agencies

- City of Bakersfield
- Kern County Water Agency Improvement District 4 (ID4)
- Kern Delta Water District (KDWD)

## Participating Agencies

- East Niles Community Services District (CSD)
- North of the River Municipal Water District (MWD)/Oildale Mutual Water Company (MWC)
- California Water Service Co.
- Vaughn Water Company



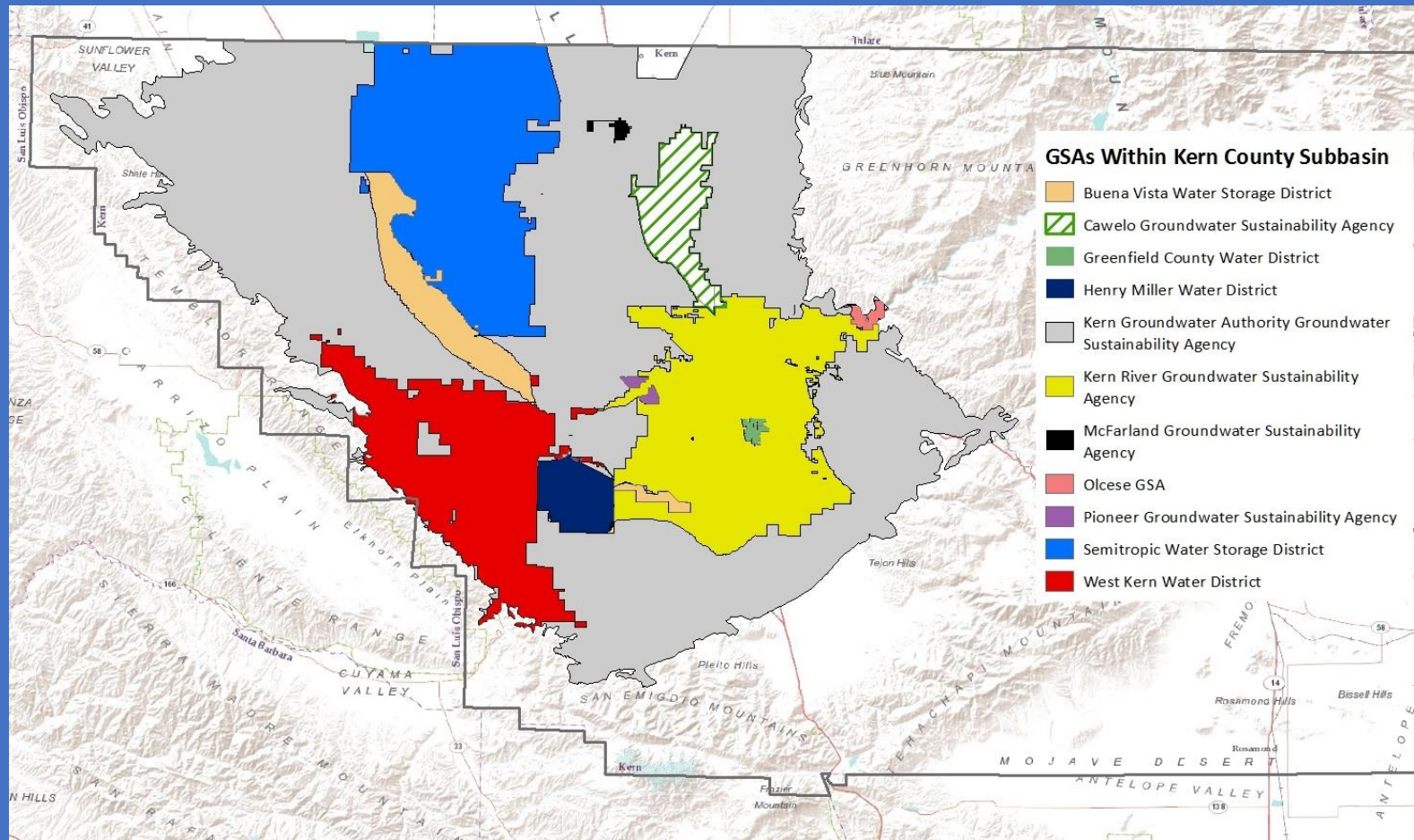
# KRGSA and Kern County Subbasin



- KRGSA located in the Kern County Subbasin
- Critically-overdrafted Basin
- KRGSA - 357 sq. mi.

# Coordination with other GSAs in Kern County Subbasin

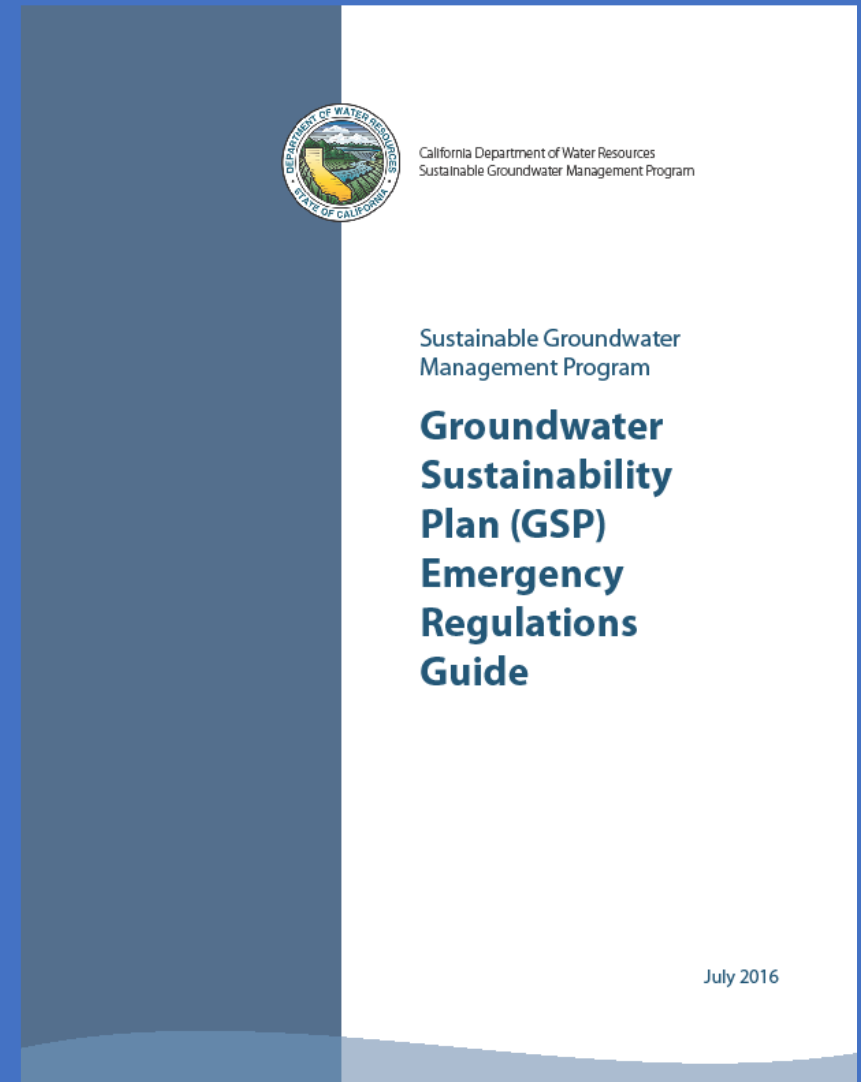
## Eleven GSAs Within Kern County Subbasin



Source: DWR SGMA Portal

# GSP Requirements and Goals

- Manage groundwater without causing undesirable results.
- Don't adversely affect an adjacent basin.
- Describe basin-wide governance and coordination to reach sustainability.
- Establish timeline to fill data gaps.
- Use adaptive management.
- Achieve sustainability goal for basin by 2040.





# Prevent Undesirable Results



Chronic lowering of water levels.



Depletion of groundwater.



Degradation of groundwater quality.



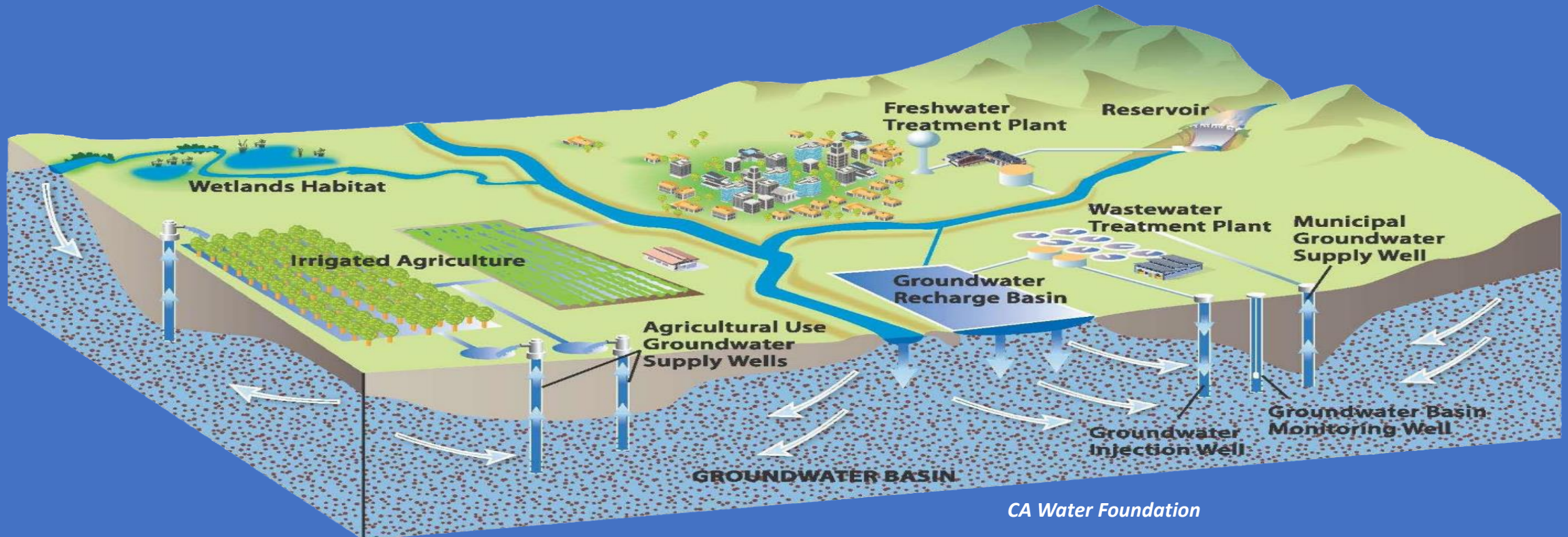
Land subsidence from groundwater pumping.



Depletion of interconnected surface water affecting beneficial uses.

# Understanding the Basin

- GSP requires conceptual model/understanding of basin.
- GSP must describe basin water budget.
- GSP includes management actions to achieve sustainability.

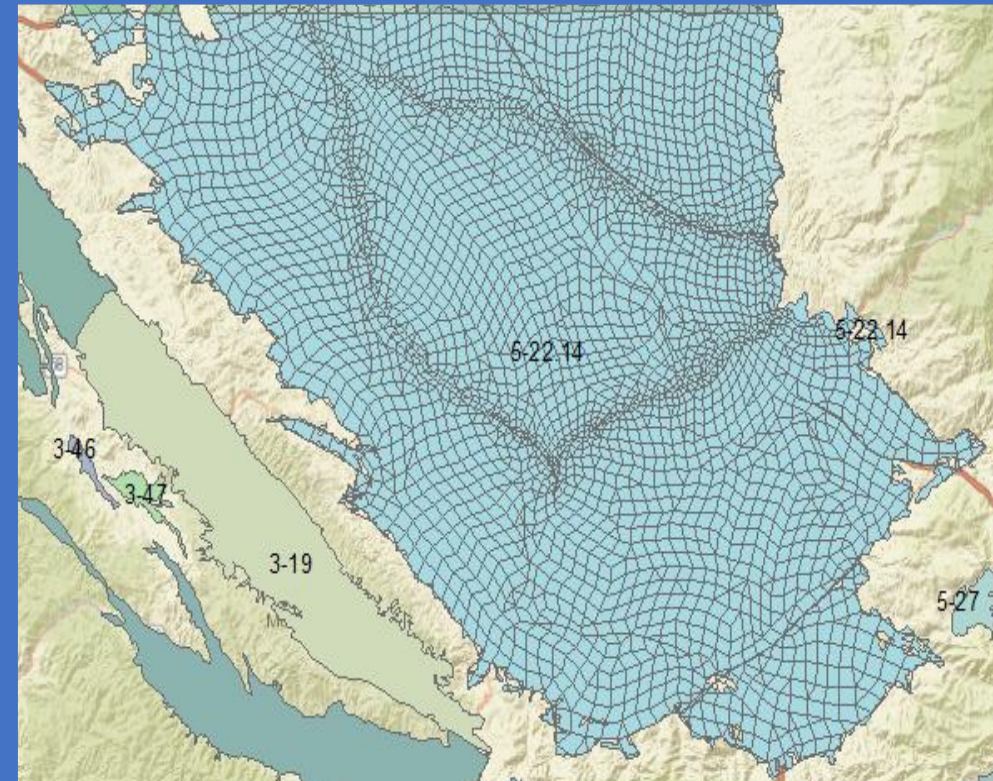


# Developing the GSP

Todd Groundwater is the technical consultant for the KRGSA, developing the groundwater analysis and modeling

1. Conduct Data Compilation/Management.
2. Establish Water Supply/Plan Area.
3. Develop a Hydrogeologic Conceptual Model and Conceptual Groundwater Budget.
4. Develop Water Budget for Current and Historic Conditions.
5. Establish Sustainability Goals and Criteria.
6. Establish Management Scenarios and Projected Water Budget for Future Conditions.
7. Actively Monitor Networks and GSP Development.

Kern County Groundwater Model



Source: Todd Groundwater

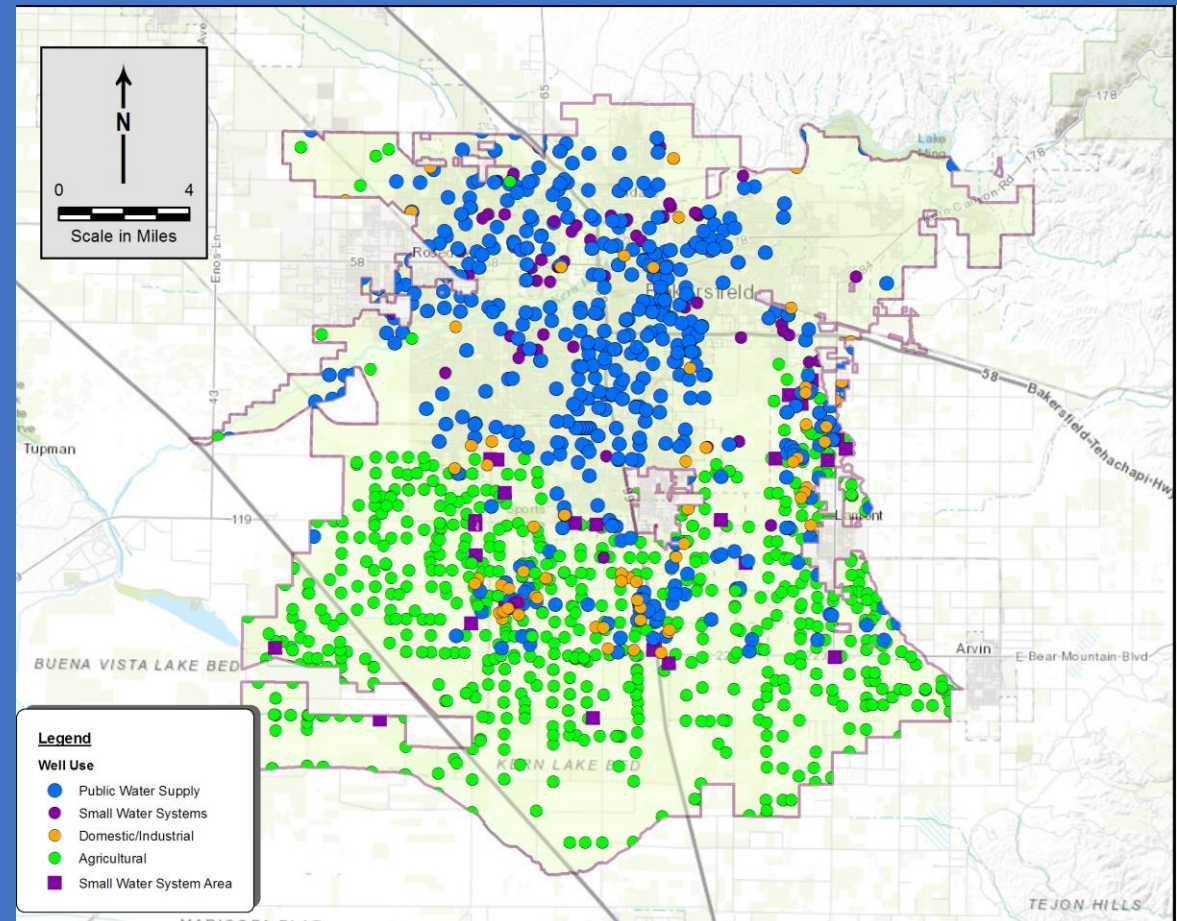


# Importance of Community Participation

## Public Input is Essential:

- Data
- Feedback on GSP
- Feedback on potential management actions
- Implementation and monitoring
- Reflects community ideas and concerns

## Active Wells in KRGSA Territory



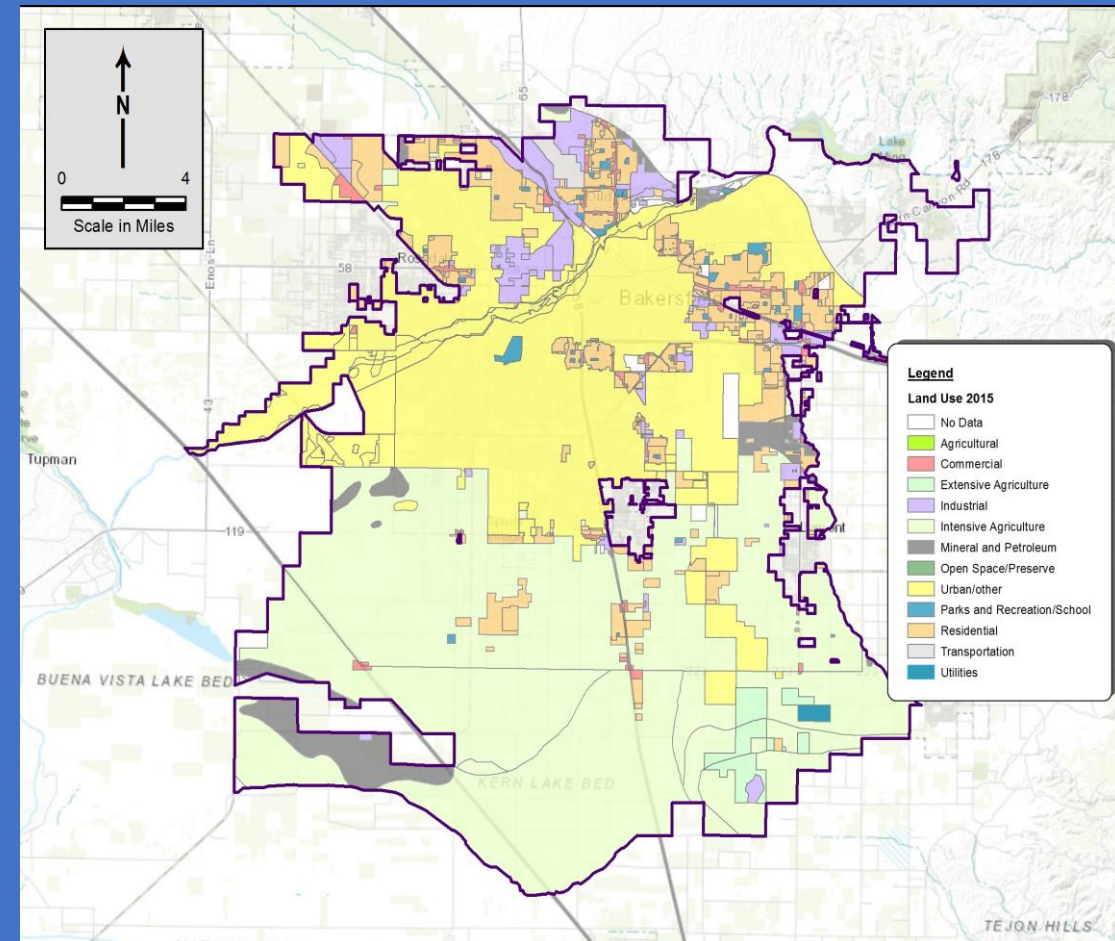
Source: Todd Groundwater



# Stakeholders and Community Participation

- KRGSA to engage a broad range of stakeholders within the KRGSA and the Kern County Subbasin, prior to making any local decisions.
- Stakeholders (Interested Parties) include:
  - Water Providers
  - Public Agencies
  - Disadvantaged Communities
  - Environmental Groups
  - Agricultural Entities
  - Industrial Users
  - Other GSAs
  - Parties Requesting Contact
  - Any Other Beneficial Uses and Users

Land Uses Within KRGSA Territory

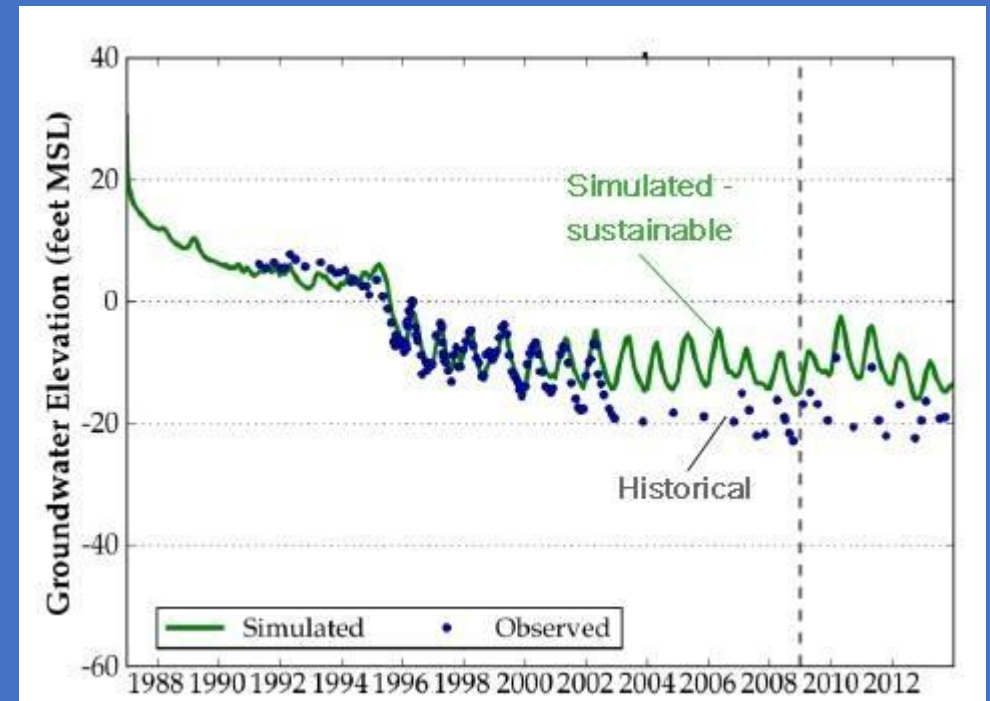


Source: Kern River Groundwater Sustainability Agency

# KRGSA Activities Moving Forward

- Continue GSP Development.
- Develop water budget to evaluate scenarios.
- Coordinate with other agencies in Kern County Subbasin.
- Conduct outreach to interested parties.
- Provide GSP status updates & meetings.
- Conduct targeted meetings and public workshops.

Simulated Sustainable Groundwater Model



Source: Todd Groundwater

# KRGSA Timeline 2017-2020



# How to Get Involved

- Tracking on Website
- Quarterly Public Meetings and Workshops
- Monthly Board Meetings
- Upcoming Targeted Meetings
- Request a Meeting with KRGSA Staff
- Sign Up Sheet (to be added to contact list)

<http://kernrivergsa.org>

SCHEDULED MEETINGS

KERN RIVER GSA

JANUARY 2017 THROUGH DECEMBER 2017

KRGSA Board Meetings

@ 10:00 a.m. CHN Conference Room A

(1st Thurs.)

KDWD Board Meetings

@ 12:00 Noon @ KDWD

(1st & 3rd Tues.)

KCWA/ID4 Board Meetings

@ 12:00 Noon @ KCWA

(4th Thurs. except Nov & Dec 3rd Wed)

City Council Meetings

Begin @ 3:30 p.m. & 5:15 p.m.

Bakersfield Water Board Meetings

@ 2:00 p.m. @ Water Resources

UBAC Board Meetings

@ 2:30 p.m. @ UBAC (Day before KCWA)

Holidays - City Hall Closed

JANUARY

S	M	T	W	TH	F	S
1	2	3	4	5	6	7
8	9	10	11	12	13	14
15	16	17	18	19	20	21
22	23	24	25	26	27	28
29	30	31				

FEBRUARY

S	M	T	W	TH	F	S
				1	2	3
5	6	7	8	9	10	11
12	13	14	15	16	17	18
19	20	21	22	23	24	25
26	27	28				

MARCH

S	M	T	W	TH	F	S
			1	2	3	4
5	6	7	8	9	10	11
12	13	14	15	16	17	18
19	20	21	22	23	24	25
26	27	28	29	30	31	

APRIL

S	M	T	W	TH	F	S
						1
2	3	4	5	6	7	8
9	10	11	12	13	14	15
16	17	18	19	20	21	22
23	24	25	26	27	28	29
30						

MAY

S	M	T	W	TH	F	S
	1	2	3	4	5	6
7	8	9	10	11	12	13
14	15	16	17	18	19	20
21	22	23	24	25	26	27
28	29	30	31			

JUNE

S	M	T	W	TH	F	S
				1	2	3
4	5	6	7	8	9	10
11	12	13	14	15	16	17
18	19	20	21	22	23	24
25	26	27	28	29	30	

JULY

S	M	T	W	TH	F	S
						1
2	3	4	5	6	7	8
9	10	11	12	13	14	15
16	17	18	19	20	21	22
23	24	25	26	27	28	29
30	31					

AUGUST

S	M	T	W	TH	F	S
		1	2	3	4	5
6	7	8	9	10	11	12
13	14	15	16	17	18	19
20	21	22	23	24	25	26
27	28	29	30	31		

SEPTEMBER

S	M	T	W	TH	F	S
						1
3	4	5	6	7	8	9
10	11	12	13	14	15	16
17	18	19	20	21	22	23
24	25	26	27	28	29	30

OCTOBER

S	M	T	W	TH	F	S
1	2	3	4	5	6	7
8	9	10	11	12	13	14
15	16	17	18	19	20	21
22	23	24	25	26	27	28
29	30	31				

NOVEMBER

S	M	T	W	TH	F	S
			1	2	3	4
5	6	7	8	9	10	11
12	13	14	15	16	17	18
19	20	21	22	23	24	25
26	27	28	29	30		

DECEMBER

S	M	T	W	TH	F	S
						1
3	4	5	6	7	8	9
10	11	12	13	14	15	16
17	18	19	20	21	22	23
24	25	26	27	28	29	30
31						



# Feedback and Questions





# Thank you!

Please contact us with any questions or concerns.

For more information, please visit our website at:

<http://kernrivergsa.org>

Phone: (661) 326-3767

Email: [krgsa@kernrivergsa.org](mailto:krgsa@kernrivergsa.org)

